



PROJECT «REGLER»

Home / Projects / Project «Regler»

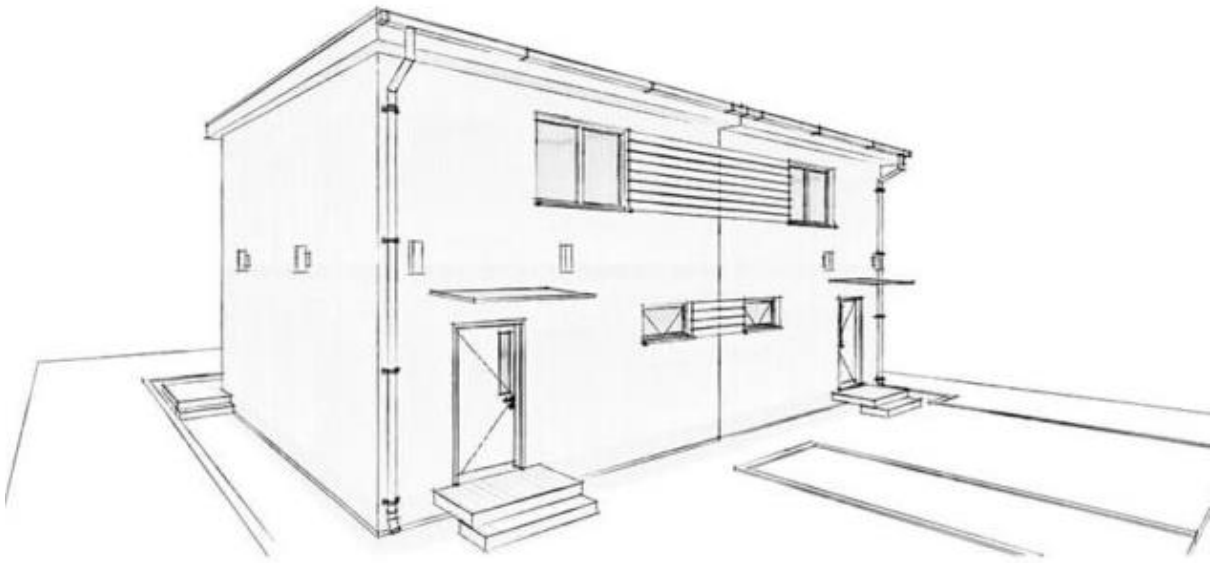
FOR
BIG
FAMILY



Property Type	Residential
Subtype	Double house
Total area	93,8 m ²
External dimensions	6.50 x 9.76 m
Built-Up Area	63.5 m ²
Roof slope	3°
Room	3
WC	2
Garage/Carport	Option







	UNDER INTERNAL FINISHING		TURNKEY PROJECT
WALLS AND FLOORS	Exterior and interior walls in accordance with the selected project	✓	✓
	Facade according to the selected project	✓	✓
ROOF	Attic and roof works, water drainage system	✓	✓
	All roof shapes are possible (pitched, hip, flat)	✓	✓
	Attic staircase	✓	✓
FINISHING WORKS	Putty of walls and ceilings in Q3 quality	an option	✓
	Painting walls and ceilings in Q3 quality	an option	✓
	Wall tiles in the bathroom and toilet	an option	✓
	Floor tiles in the bathroom, toilet, hallway	an option	✓
	Laminate flooring in the living rooms	an option	✓
	Parquet floors in living rooms	an option	an option
	Wooden staircase	✓	✓
WINDOWS AND DOORS	Gelolite window sills (inside) and aluminum (outside)	✓	✓
	Entrance door with multi-point lock and security lock	✓	✓
	Windows, patio doors made of white plastic	✓	✓
	Windows, interior doors made of other materials (aluminum, wood, wood / aluminum)	an option	an option
	Interior doors in white, including accessories	an option	✓
FURNITURE	Kitchen with electrical equipment	an option	✓
	Bathroom Furniture Set	an option	✓
ELECTRICAL AND PLUMBING LAYOUT	Electrical installations (switches, sockets, FI-switches, circuit breakers, including wiring)	✓	✓
	Sanitary wiring (connecting hot and cold water, sewage, toilet installation for suspended)	✓	✓
	Sanitary equipment (washbasin, shower tray, bathtub, toilet bowl, in accordance with the selected project)	an option	✓

HEATING AND HOT WATER		UNDER INTERNAL FINISHING	TURNKEY PROJECT
	Heat pump	an option	☑
	Heat distribution with underfloor heating	☑	☑
	Gas boiler (including hot water heating)	an option	an option
	Heat recovery ventilation	an option	an option
	Surface cooling with reversible heat pump	an option	an option

FOUNDATION		UNDER INTERNAL FINISHING	TURNKEY PROJECT
	Strip foundation	an option	an option
	Basement in use	an option	an option

TRANSPORTATION & ASSEMBLY		UNDER INTERNAL FINISHING	TURNKEY PROJECT
	Transportation (Vienna)	☑	☑
	Import VAT	☑	☑
	House assembly, including protective scaffolding	☑	☑

Kind Regards,

Scantastic Team

Tlf: + 45 282 357 01

E - Mail: kontakt@scantastic.dk

for more information please visit: scantastic.dk

We Deliver Solutions

